



incredible

Innovation Networks for Cork, Resins & Edibles
in the Mediterranean basin

#NWFPpolicy
www.incredibleforest.net

Policy Forum “Untapping the potential of non-wood forest products for Europe's green economy”

16th - 17th March 2021
Online event

Coordinator



Partners



CTFC



Forestas
Agencia forestale regionale pro a sviluppu de su
territoriu e de s'ambiente de sa Sardegna
Agencia forestale regionale per lo sviluppo del
territorio e dell'ambiente della Sardegna
SardegnaForeste



MINISTERIO DE CIENCIA, INNOVACION Y UNIVERSIDADES
INIA
Instituto Nacional de Investigación y Tecnología Agraria y Alimentaria



CROATIAN
FOREST
RESEARCH
INSTITUTE



This project has received funding from the European Union's Horizon 2020 research and innovation programme under grant agreement N° 774632.



incredible

Innovation Networks for Cork, Resins & Edibles
in the Mediterranean basin

**Policy Forum “Untapping the potential of
non-wood forest products for Europe's
green economy”**

#NWFPpolicy
www.incredibleforest.net

16th - 17th March 2021
Online event

NATURAL RESIN’S VALUE CHAIN: Untapping the tapping activity

Mariana Jorge Ferreira



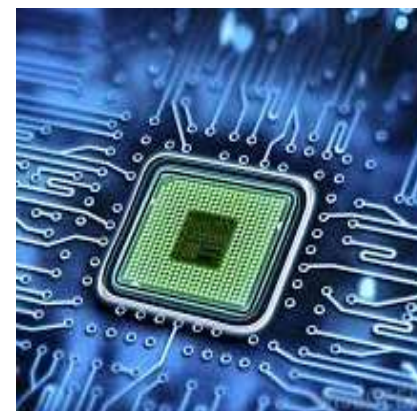
GrupoRB

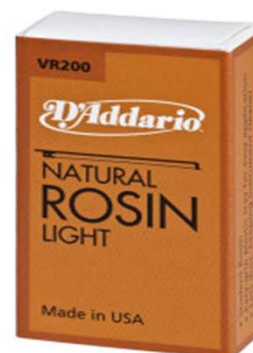




Policy Forum “Untapping the potential of non-wood forest products for Europe's green economy”

#NWFPpolicy

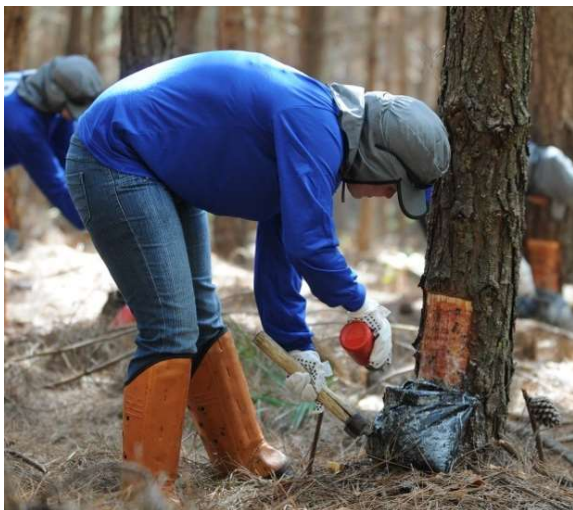












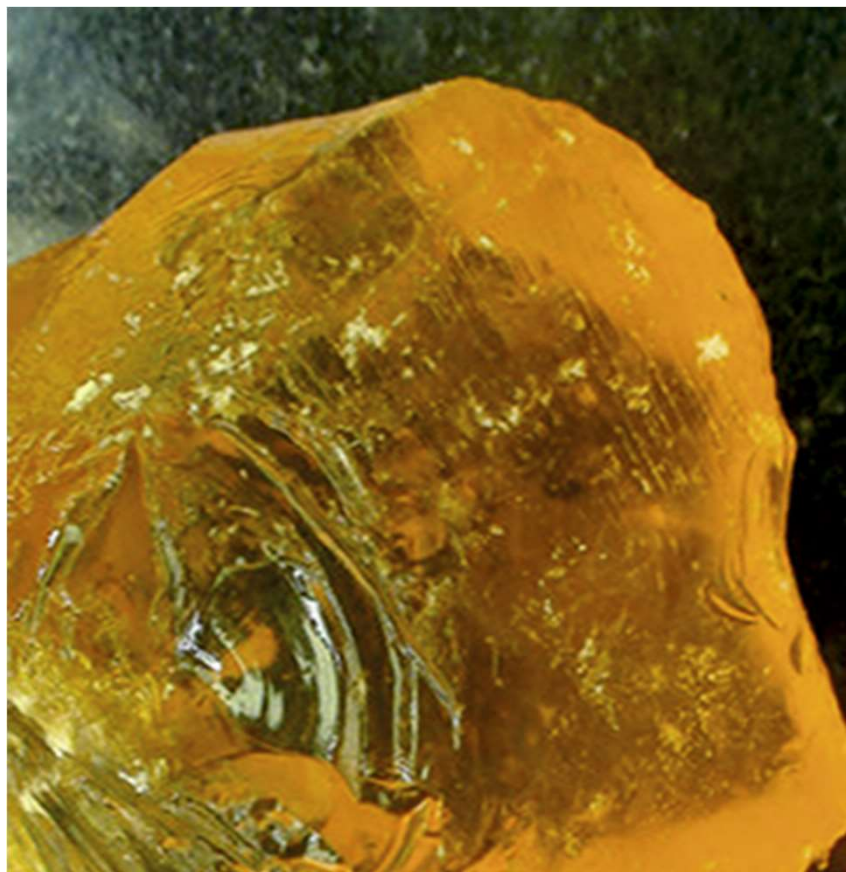
**Policy Forum “Untapping the potential of
non-wood forest products for Europe's
green economy”**

#NWFPpolicy



Policy Forum “Untapping the potential of non-wood forest products for Europe's green economy”

#NWFPpolicy



Policy Forum “Untapping the potential of non-wood forest products for Europe's green economy”

#NWFPpolicy



Policy Forum “Untapping the potential of non-wood forest products for Europe's green economy”

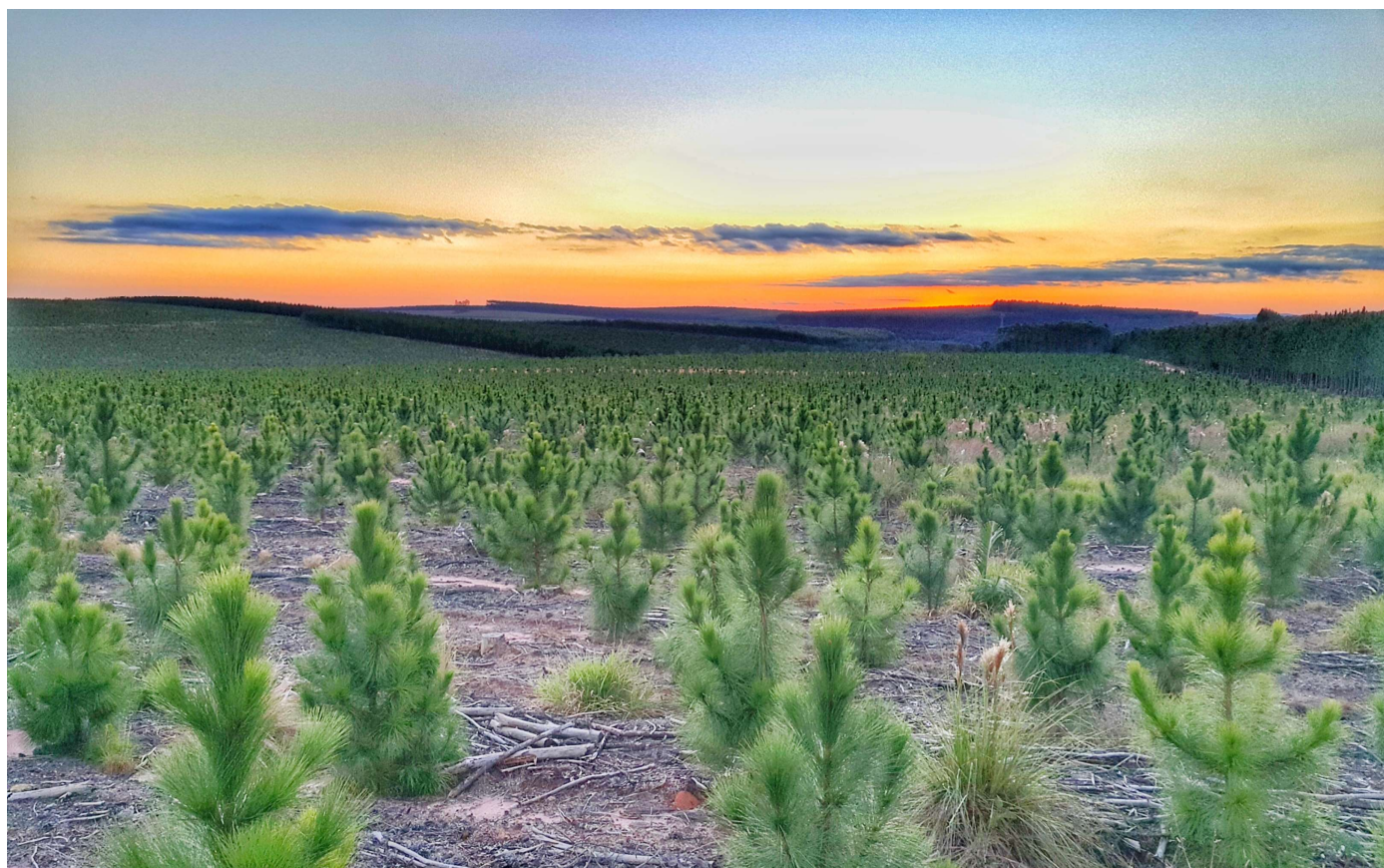
#NWFPpolicy



Policy Forum “Untapping the potential of non-wood forest products for Europe's green economy”

#NWFPpolicy





mferreira@luresaresinas.com



Thank you!



incredibleforest.net



[@Incredibforest](https://twitter.com/Incredibforest)



[@incredible-project](https://www.linkedin.com/company/incredible-project)