



**incredible**  
Innovation Networks for Cork, Resins & Edibles

## “Resin resource monitoring & modelling in a context of climate change”

Madrid, January 21/22, 2019



Organized by:

INIA, Madrid (Spain)

iNet

Interregional Workshop

Coordinator



Partners



**Forestas**  
Agencia forestal regional pro svaluju de su territoriu de su ambiente de su Sardegna  
Agencia forestal regional per lo sviluppo del territoriu e dell'ambiente della Sardegna  
SardegnaForeste



This project has received funding from the European Union's Horizon 2020 research and innovation programme under grant agreement No 774632

[www.incredibleforest.net](http://www.incredibleforest.net)

## “Resin resource monitoring & modelling in a context of climate change”

**Introduction:** This two-day event combines a seminar about the state of art and the sector’s requests. Multi-actor sessions will be animated by innovation facilitators, to cover the first of the identified iNet Priorities related to sustainable production of natural resin from Mediterranean forests, **Resource modelling in a context of climate change**. It has been retitled **Long term resource availability in a context of global change**, switching focus from science tools to more practical issues. The quality and relevance of delivered knowledge will be collectively assessed, priorities and future activities will be identified.

**Addressed to:** Forestry modellers, Resin sector enterprises and stakeholders, Decision makers

**Language:** English

**Objectives to be reached:**

**A. Participants:**

- 1- are familiar with INCREdible network and objectives;
- 2- have a grip on resin resource availability and potential in the different countries;
- 3- are aware of the main threats & challenges for resin tapping in pine forests;
- 4- know about the state of art, potential and requirements of forest modelling for resin production;
- 5- agree on the needs and challenges of the resin sector that forest inventories models can respond.

**B. Resin iNet questions directly targeted:**

- 10 - What is the potential for resin production in each region?
- 12 - In a context of global change, will the geographical area and productivity of the maritime pine change?

**Practical information**

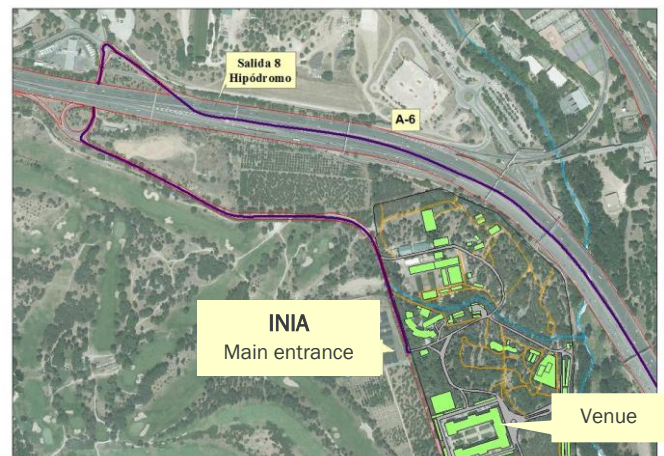
Venue: INIA, National Institute for Agricultural and Food Research and Technology ([www.inia.es](http://www.inia.es))

Carretera de La Coruña km 7,5, 28040 Madrid

[N 40° 27' 18"; W 03° 44' 55"](#) (A6 exit km 8 Hipódromo”)

**Shuttle bus Madrid-INIA**

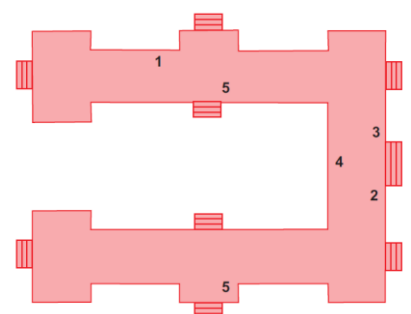
On **Monday 21 at 10:30 AM** and on **Tuesday 22 at 8:30 AM** a bus will bring participants to INIA, leaving from the **Taxi stand Calle de la Princesa 50**, in front of the “Corte Ingles” stores, Metro station **Argüelles (M3, M4, M6)**. At **6:00 PM (Monday)** and **5:00 PM (Tuesday)** it leaves from INIA back to Madrid.



For any request, please contact INIA-CIFOR secretariat [seccifor@inia.es](mailto:seccifor@inia.es), reference “Resin workshop”

**INIA Main building**

- |   |           |
|---|-----------|
| 1 | Cafeteria |
| 2 | Reception |
| 4 | Venue     |
| 5 | WC        |



**PROGRAMME**

<b>Monday, January 21, 2019</b>	
<b>11:00</b>	<b>Register of participants</b>
<b>12:00</b>	<b>Opening session</b> <i>Welcome by the Director of INIA</i> Esther Esteban Rodrigo <i>The Resin iNet of INCREDible, the European thematic network on Mediterranean NWFP</i> Javier Calvo, CESEFOR <i>Objectives and structure of the workshop</i> Sven Mutke, INIA-iuFOR
<b>Session 1. Resin production from pine forests: resources, inventory and monitoring – where are we?</b>	
<b>12:30</b>	<i>Portuguese resin traceability &amp; statistics (<a href="#">SiResin</a>)</i> Paula Soares, ISA-U.Lisboa
<b>12:45</b>	<i>Resin in Spanish National Forest Inventory &amp; statistics</i> Elena Robla, MAPAMA
<b>13:00</b>	<i>Potential of French maritime pine forests for resin production</i> Armand Clopeau, EFI, on behalf of Herni Husson, CRPF Nouvelle-Aquitaine
<b>13:30</b>	<b>Lunch</b>
<b>14:30</b>	<i>Resin tapping in Castilla y León –keys of a success story</i> Javier Ezquerro / Álvaro Picardo, Junta de Castilla y León
<b>14:45</b>	<i>Development of a web/Android app for resin traceability</i> Javier Calvo, CESEFOR-SustForest Plus project
<b>15:00</b>	<i>Pine forests in Tunisia – an opportunity for local employment in resin production?</i> Ibtissem Taghouti / Mokhtar Baraket, INRGREF
<b>15:15</b>	<i>Panel Discussion</i>
<b>16:00</b>	<b>Coffee break</b>
<b>16:30-18:00</b>	<ul style="list-style-type: none"> <li>· What are the main data gaps, and inconsistencies between regions and countries?</li> <li>· How could these gaps be filled and the systems harmonised?</li> <li>· Which other unofficial or indirect data sources could be prospected to complete the picture?</li> </ul> <i>Group work</i>

**Tuesday, January 22, 2019**

<b>Session 2. Threats &amp; challenges for resin tapping in pine forests – what are we facing?</b>	
<b>09:00</b>	<i>Climate change and forest resilience – maritime pine decline at southern Guadarrama</i> Guillermo Gea, INIA
<b>09:15</b>	<i>Maritime pine decline in Northern Castile, droughts and implied pathogens</i> Julio Diez Casero, iuFOR-U. Valladolid
<b>09:30</b>	<i>Rural abandonment and evolution towards megafires – a rural renaissance needed?</i> Conceição Colaço, ISA-ULisboa
<b>09:45</b>	<i>Panel Discussion</i>
<b>Session 3. Resin yield data &amp; models, a support for resource mobilisation – what can science tell us?</b>	
<b>10:00</b>	<i>Yield data and models for a sustainable resin sector</i> Mariana Ferreira, LURESA Resinas
<b>10:15</b>	<i>What information is needed for market and profitability analysis of resin tapping systems?</i> Armand Clopeau, EFI-SustForest Plus project
<b>10:30</b>	<i>SustForest Lab &amp; sampling protocols for Maritime pine resin as forest resource</i> Ricardo Alía, INIA-iuFOR
<b>10:45</b>	<i>Panel Discussion</i>
<b>11:00</b>	<b>Coffee break</b>
<b>11:30</b>	<i>Climate and soil factors influencing individual tree resin yield</i> Aida Rodriguez, UPM
<b>11:45</b>	<i>Process based models for resource monitoring in Pinus pinaster</i> Marta Gonzalez García, CETEMAS
<b>12:00</b>	<i>Remote sensing approaches to forest resource inventories for resin yield modelling</i> Rafael Alonso, fôra
<b>12:15</b>	<i>Panel Discussion</i>
<b>12:30</b>	<b>What models does the resin sector need? What data do the models need? Are they available?</b> <i>Group work</i>
<b>13:30</b>	<b>Lunch</b>
<b>Final Session. Needs and challenges for the sector that forest models can respond</b>	
<b>14:30</b>	<b>Which assessment and monitoring systems or tools are available or possible? Is it feasible to forecast resin availability under a global change sceneries)?</b> <i>Group work</i>
<b>16:00</b>	<i>Plenary Session</i>
<b>16:30</b>	<b>Closure</b>
<b>17:00-18:30</b>	<i>[SustForestPlus – internal project coordination meeting]</i>